



Sailing Instructions

Solent Super Series

Round 1 – Cowes

12th/13th October

The ORGANISING AUTHORITY (OA) is: The ISLAND SAILING CLUB

EVENT MANAGEMENT by FourthCape

The sailing Instructions will consist of the instructions in RRS Appendix S, Standard Sailing Instructions and supplementary Sailing Instructions.

SUPPLEMENTARY SAILING INSTRUCTIONS

1. SCHEDULE OF RACES:

Round	Date	Day	Warning Signal	Preparatory Signal	One Minute Signal	Start
1	12 th /13 th October Cowes	Sat Race 1	09:55	09:56	09:59	10:00
		Sat Race 2	To follow Race 1			
		Sun Race 3	10:25	10:26	10:29	10:30
2	26 th /27 th October Gosport	Sat Race 4	10:25	10:26	10:29	10:30
		Sat Race 5	To follow Race 4			
		Sun Race 6	09:55	09:56	09:59	10:00
3	9 th /10 th November Yarmouth	Sat Race 7	10:25	10:26	10:29	10:30
		Sat Race 8	To follow Race 7			
		Sun Race 9	09:55	09:56	09:59	10:00
4	23 rd /24 th November Hamble	Sat Race 10	10:25	10:26	10:29	10:30
		Sat Race 11	To follow Race 10			
		Sun Race 12	09:55	09:56	09:59	10:00

1.1 Except due to a general recall, no warning signal will be displayed after 14:30 on Saturdays or after 12:00 on Sundays.

2. THE MARKS

- Courses will use race marks as identified on the SCRA Racing Marks List - <https://www.scra.org.uk/solent-marks/solent-marks2>
- Course announcements will be made on VHF Channel 37a and will use the 2-digit designations



- c. Fixed metal marks, inflatable laid marks and robotic 'Bot' Marks may all be used

3. START LINE

3.1 The Start Line for Round 1, Cowes shall be the Island Sailing Club Transit Line

- a. The Starting Line will be the extension of a line through the two Club Flagstaffs, each bearing an orange panel with a black cross.
- b. The Outer Distance Mark (ODM) is Trinity House Buoy. (Note the ODM may not be on the transit line)
- c. The Inner Distance Mark (IDM) is the North Cardinal Buoy at the Western end of the Cowes Outer Breakwater. Boats should be aware shallow water and rocky seabed to the south. When starting, boats shall pass between the ODM and IDM
- d. The Race Committee may decide to use a Robotic Mark as the ODM instead of Trinity House Buoy. If this is the case competitors will be advised on VHF Channel 37a

4. FINISH LINE

4.1 The Finish Line for Round 1, Cowes, which is **not** the same as the start line, is defined as the line between the Island Sailing Club Rear Flagstaff and Snowden Buoy. See Appendix A

4.2 A Finish Line may also be set between a RIB and fixed Mark or Robotic Mark

5. NOTICE BOARD

Located at: www.fourthcape.com/solentss

6. FURTHER INFORMATION

- a. For further information please contact:
FourthCape
Tel: 01983 201146 Email: info@fourthcape.com
Website: www.fourthcape.com/solentss

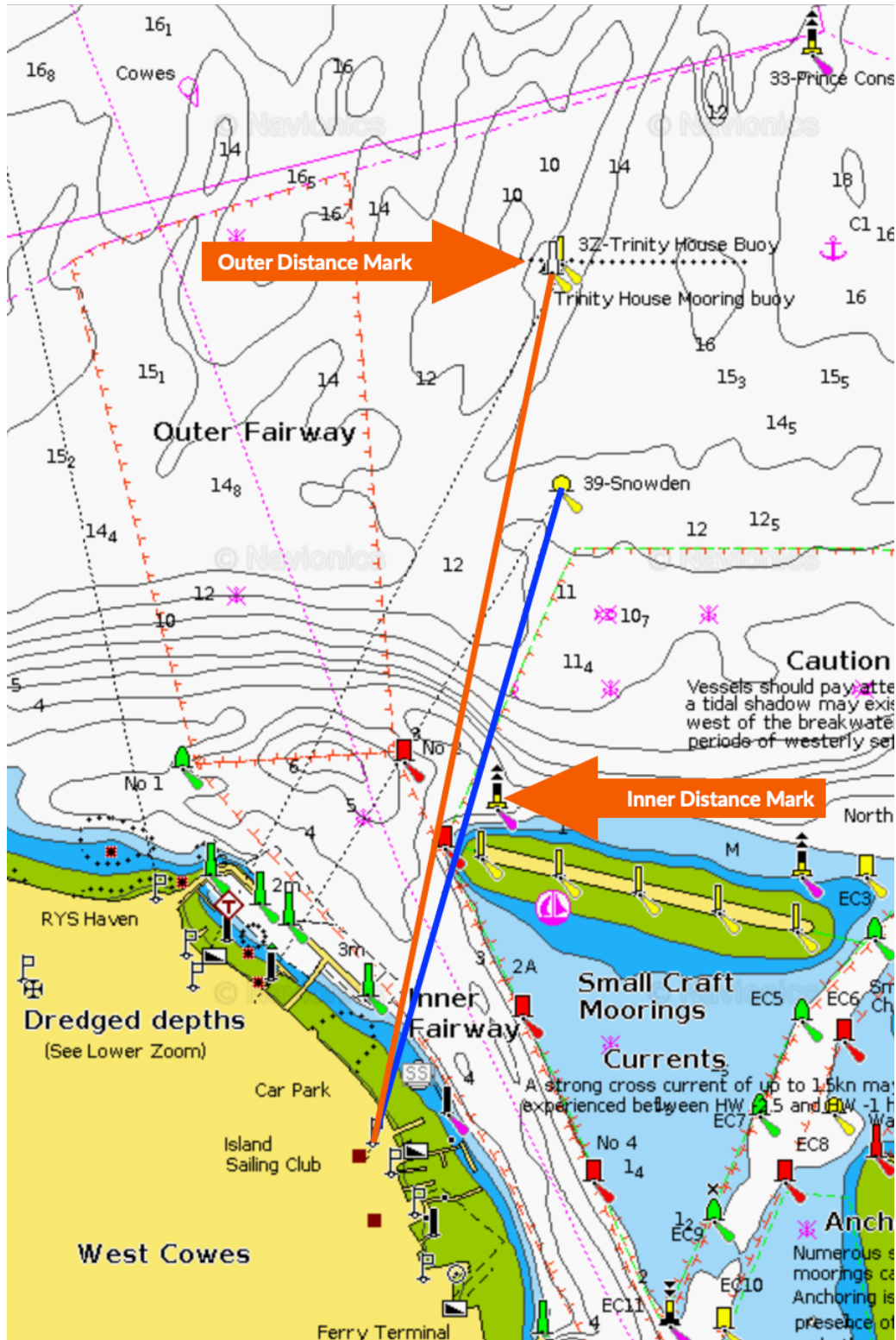
APPENDIX

A. Island Sailing Club Lines



APPENDIX A - Island Sailing Club Lines

Orange Line = Start Line Transit
Blue Line = Finish Line



NB: Tidal effect on the ODM [Trinity House Buoy] may put it on the course side of the transit.