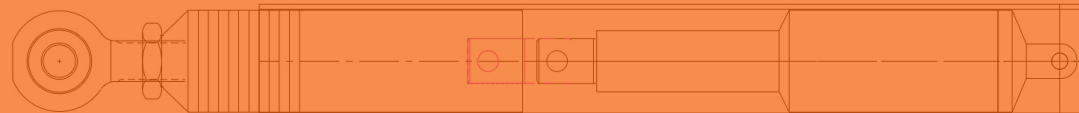


E - B A R



The E-BAR, developed and produced by FourthCape combines a lightweight carbon tube with precision-engineered ends and actuator for smooth Toe In/Out adjustment of rudders whilst sailing.

The remotely adjusted link bar allows optimal adjustment of a twin rudder system, minimising windward rudder drag and maximising control, delivering improved handling - that increases average speeds.

A proven design having been selected by fully crewed and double-handed teams alike, with race success onboard Jeanneau Sun Fast and JPK twin rudder boats.

Hydrodynamic flow much like aerodynamic flow requires trimming, as you would trim a jib for the various points of sail, with the E-BAR you can now trim your rudders to the heel angle and speed of the boat.

RESULTS

2022 RORC Caribbean 600

IRC1 1st (Sunrise)

2021 Rolex Fastnet Race

Winner Overall (Sunrise)

2nd Double-Handed (Swell)

2021 Rolex Middle Sea Race

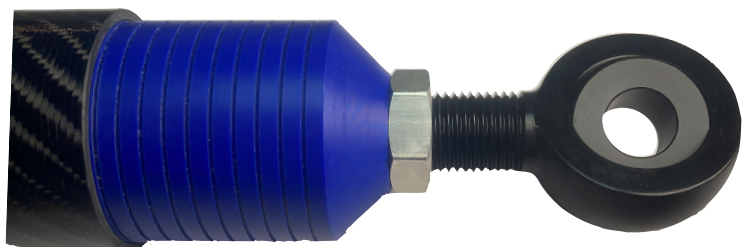
2nd Overall (Sunrise)

2019 Rolex Fastnet Race

2nd Double-Handed (Fastrak XII)

TECHNICAL SPECIFICATION

- > 50mm Toe In/Out Adjustment
- > Requires 5a Fused 12v Supply (Typical load 1.5a at attachment)
- > Military Spec IP68 Connections
- > Direct Connect To B&G H5000 Processor
- > Integration with instrument systems via interface box receiving 0-3v linear, analogue feed
- > Typical system weight - 3.4kg



FEATURES

- > Lightweight carbon fibre steering bar
- > Minimal power consumption adjusting
- > Intelligent IP68, illuminated, waterproof Keypad allows adjustment on deck
- > Integrated sensor allows Toe In/Out position to be displayed on yacht's instruments
- > Simple upgrade for:

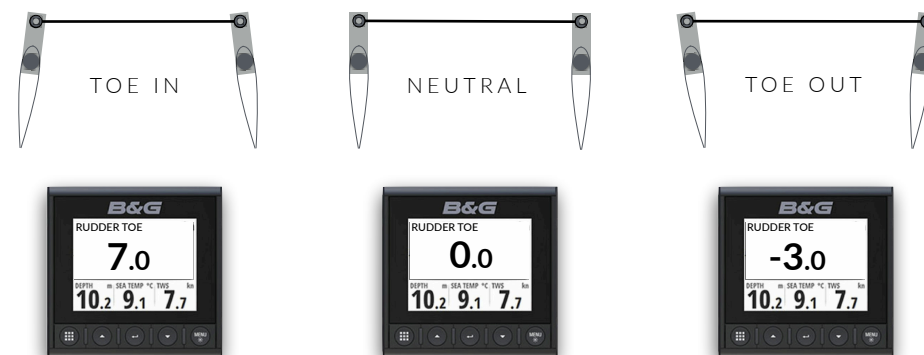
Jeanneau Sun Fast; 3200, 3300 & 3600

JPK; 1010, 1030, 1080, 1180

The E-BAR's integrated sensor provides a signal for connection to a yacht's instrument system.

This connection allows the output of the sensor to be available on existing displays, showing the Toe adjustment and enabling settings to be logged against other data, for performance analysis and optimisation.

The sensor can be directly linked with a B&G H5000 processor via the analogue input or other instrument systems via a simple interface box taking the sensor's 0-3v linear analogue output.





INTELLIGENT KEYPAD

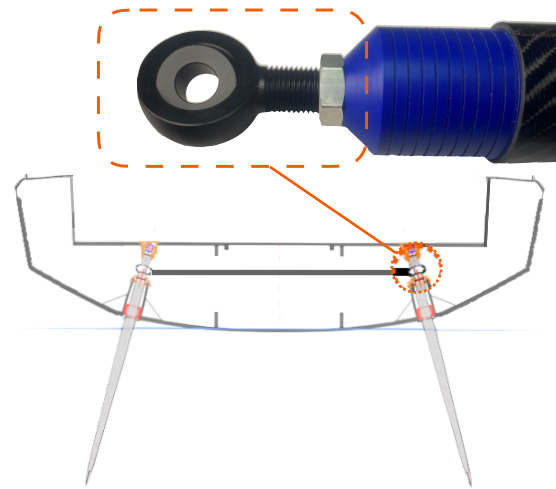
The E-BAR is supplied with a waterproof Keypad controlling the functionality of the E-BAR system.

The Keypad's memory enables a 'BASE' setting to be stored and quickly returned to by a simple simultaneous press of buttons.

DEDICATED DISPLAY

Where it's not possible to integrate the E-BAR system with an existing instrument package, our Dedicated Display allows the constant visual reference of rudder toe setting.

Size: 85mm x 65mm
Weight: 140g



ROSE JOINT

The Rose Joint is a 'rod end bearing' allowing mechanical articulation of a joint and connects the E-BAR to the tiller and rudder quadrants. The Rose Joint can be wound in and out of the E-BAR ends to set the 'BASE' Toe setting.

*The E-BAR is compatible with the Jeanneau supplied SF3300 Rose Joints.



IRCRecords™ OFFER

A free IRCRecord™ attempt voucher will be provided with each E-BAR purchase, this can be used on any IRCRecord™ course.

IRCRecords™ brings you the thrill of making and breaking sailing records utilising the highly popular IRC Rating system. A 'Corrected Time Record' allows boats of all shapes and sizes to compete on a level playing field.

For more info: www.IRCRecords.com

PRICE GUIDE

Boat Type	Jeanneau Sun Fast		JPK Yachts		Custom
	3300	3200/3600	1010/1030/1080	1180	
E-BAR	£3,235*	£3,790	£3,550	£3,790	POA
Fixed Carbon Bar	£865*	£1,400	£1,175	£1,400	POA
OPTIONS					
Rose Joints per Pair	£315	Included			
Display	£715				
E-BAR System Weight	3.4kg	3.6kg	3.4kg	3.6kg	

* Denotes Rose Joints not included - Prices are subject to final quotation & are inc. UK VAT

Custom length bars can be made for boats outside of the above ranges and can be quoted on request.

CONTACT

info@fourthcape.com



+44 (0)1983 201146



www.fourthcape.com/ebar

